



47073 Warm Springs Blvd.  
Fremont, CA 94539  
Ph. 510-657-4444, Fx. 510-657-3274  
e-mail mail@dawnvme.com

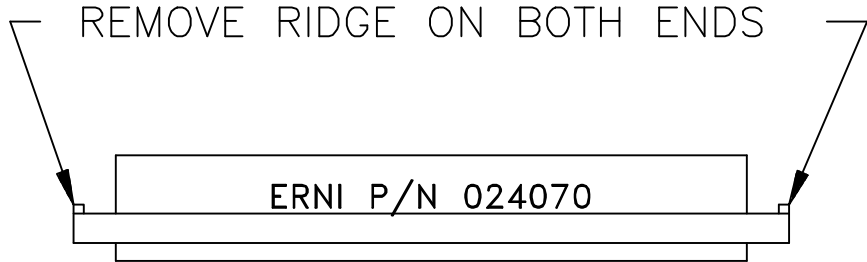
Date: December 8, 1997

To: VME-64x User Community

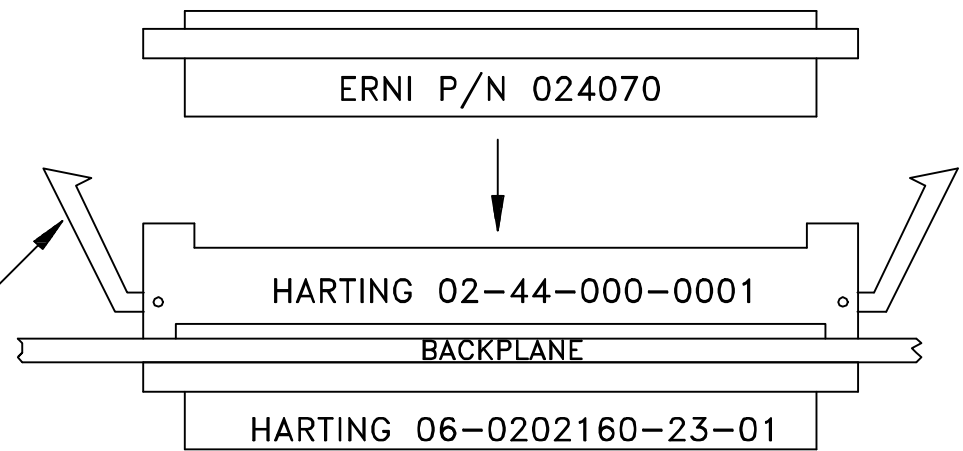
Subj: Backpanel I/O, VME-64x Backplanes

1. With all the user-defined pins now available on VME-64x backplanes, the question has arisen: how can one access these pins with a wired connection. Additionally, if we can make a wire connection to these pins, how can we retain the connector and make it resistant to vibration and pulling? The attached sketches detail some suggested methods that we have developed and used. They are, no doubt, not the only ways to wire user defined pins to the outside world. If you develop any other way to accomplish this task, please make it known to other users through VITA ([www.vita.com](http://www.vita.com)).
2. It is possible that the retention method shown in the "backplane with J0" sketch might work for two 2x32 ribbon cable connectors to connect to the Z&A rows and C&D rows on a J2 connector. If anyone has success with this method, let me know and I will see that it is distributed to the user community.
3. Another method that has been proposed, but not personally tested, is to replace the "retainer" in the sketch "backplane with J0" with a 0.6" section of threaded strip like that used in subrack extrusions. A M2.5x30 screw could be inserted from the front side of the backplane through the ERNI connector to be retained by the threaded strip.
4. All of these methods are merely suggestions and Dawn VME Products does not guarantee that they will work and Dawn assumes no liability for their use. Please contact sales representatives of the connector manufacturers mentioned for ordering the depicted products.

REVISIONS			
REV	DESCRIPTION	APPROV'D	DATE



2X- EPT 115-19002



THE ABOVE SKETCH IS A SUGGESTION ONLY. DAWN VME PRODUCTS DOES NOT GUARANTEE OR WARRANTY ANY PARTS OR APPLICATION SHOWN. ERNI, HARTING, AND EPT ARE REGISTERED TRADEMARKS OF THE RESPECTIVE COMPANIES.

UNLESS OTHERWISE SPECIFIED DIMENSIONS ARE IN INCHES TOLERANCES ARE: FRACTIONS    DECIMALS    ANGLES		
±	.XX±	±
	.XXX±	
MATERIAL		
FINISH		
DO NOT SCALE DRAWING		

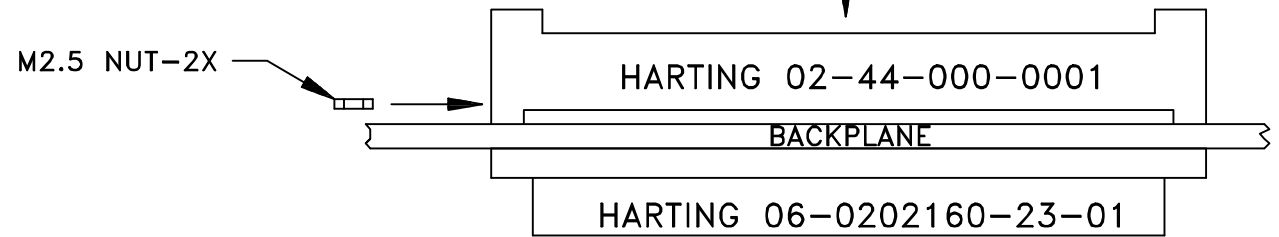
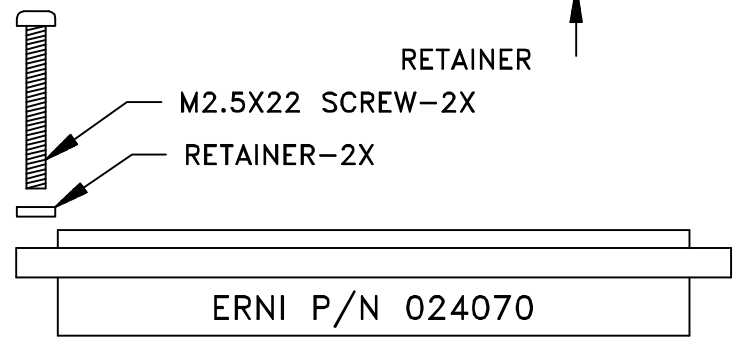
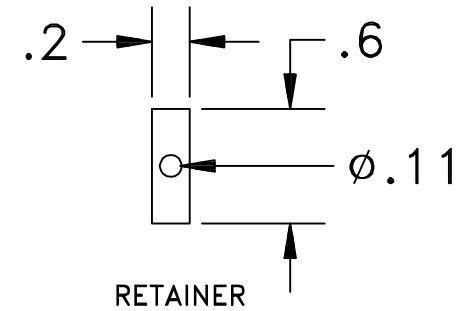
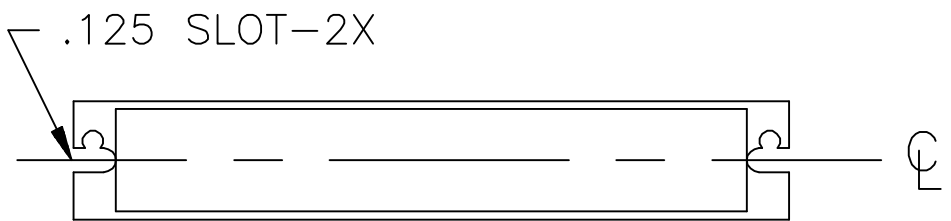
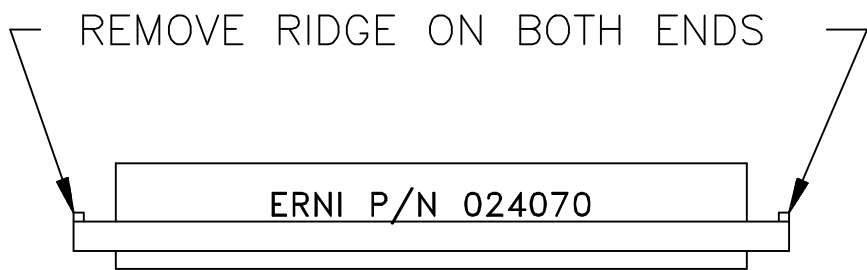
CONTRACT NO.	
APPROVALS	DATE
DESIGNED	
DRAWN	
CHECKED	
ISSUED	

**Dawn VME Products; Inc.**  
47073 WARM SPRINGS BLVD., FREMONT CA 94539

VME-64x  
REAR I/O IMPLEMENTATION  
BACKPLANE WITHOUT JO CONN.

SIZE	FSCM NO.	DWG.NO.	REV.
A	45620		
SCALE			SHEET of

REVISIONS			
REV	DESCRIPTION	APPROV'D	DATE



THE ABOVE SKETCH IS A SUGGESTION ONLY. DAWN VME PRODUCTS DOES NOT GUARANTEE OR WARRANTY ANY PARTS OR APPLICATION SHOWN. ERNI, HARTING, AND EPT ARE REGISTERED TRADEMARKS OF THE RESPECTIVE COMPANIES.

UNLESS OTHERWISE SPECIFIED DIMENSIONS ARE IN INCHES TOLERANCES ARE: FRACTIONS DECIMALS ANGLES		
±	.XX±	±
	.XXX±	
MATERIAL		
FINISH		
DO NOT SCALE DRAWING		

CONTRACT NO.	
APPROVALS	DATE
DESIGNED	
DRAWN	
CHECKED	
ISSUED	

**Dawn VME Products, Inc.**  
47073 WARM SPRINGS BLVD., FREMONT CA 94539

VME-64x  
REAR I/O IMPLEMENTATION  
BACKPLANE WITH JO CONN.

SIZE	FSCM NO.	DWG. NO.	REV.
A	45620		
SCALE	SHEET		of